



2021-2022 Annual Report



CALIFORNIA HUMAN DEVELOPMENT
CREATING OPPORTUNITIES TO END POVERTY



TABLE OF CONTENTS

From the Top - A Message from CHD's Leadership	2
Who We Are	3
Strategic Goals	4
Farmworker Services	5
Affordable Housing	7
Immigration and Citizenship	9
Day Labor Services	11
Camp Nunez	12
End of a Era	13
Diversity, Equity, and Inclusion at CHD	15
A Special Thank You	16
CHD Directory	20
Get Involved	21
Acknowledgements	22



California
Human Development

Creating
Opportunities

Board of Directors

Miguel Mejia
Chair

Antonio Silva
Vice-Chair

Luis Sanchez
Treasurer

Carly Velez Huston
Secretary

Maximilliano Aguilar

Hector Brambila

Juan Delgado

Shinder Gill PhD

Heather Henry

Ricardo Juarez

Horacio Parás

Amber Yearton

Executive Team

Thomas Stuebner
Chief Executive Officer

Santino Garcia
Chief Operating Officer

Art Feagles

Chief Financial Officer

Joyce Suzuki

Human Resource Director

Eddie Shabestari

IT Director

Isaiah Antoine

Community Impact Director

From the Top

California Human Development (CHD) is a non-profit organization waging the War on Poverty for more than 50 years. Inspired in service to our state's farmworkers, today CHD serves people of low income from many walks of life—giving 25,000 people in 31 northern California counties a hand up to the American Dream.

This past fiscal year presented many challenges, specifically related to the COVID-19 pandemic. While CHD took precautions and therefore never closed our doors, understandably client attendance, the source of our income, fell significantly as people were reluctant to socially engage.

The direct impact of this decrease in client census resulted in a significant loss of income, while expenses increased due to inflation. With mounting operational losses, CHD faced the unfortunate decision to close our disABILITY Services and Substance Recovery Services programs. Our thanks go to our wonderful colleagues who served our clients with expertise and compassion for so many years.

True to our roots, as a farmworker services agency addressing the holistic needs of farmworkers and striving to create opportunities, we move into a new fiscal year with a renewed focus on farmworkers via our Farmworker Services, Affordable Housing, and Community Services (Immigration and Citizenship, Day Labor Services, and Special Programs) divisions.

We look ahead to implementing new Regional Community Advisory Councils, improving and further developing our farmworker housing, reestablishing binational health fairs, and expanding our outreach to the northern counties.

Our thanks to our Board of Directors, resolute staff and volunteers, funding agencies, and many donors and supporters. Through our joint commitment and efforts, we can make a significant and positive impact on the lives of farmworkers, the everyday heroes who put food on America's tables.

Respectfully yours,



Miguel Mejia,
Board Chair



Thomas Stuebner,
Chief Executive Officer



Pictured (Left to Right): The founders and early supporters: Candido Morales, Aurelio Hurtado, George Ortiz, and Louis Flores

Who We Are

Mission

We are a human services organization that creates paths and opportunities for people in need to rise above barriers in their pursuit of better lives.

Vision

We open doors, build strong communities, and improve lives.

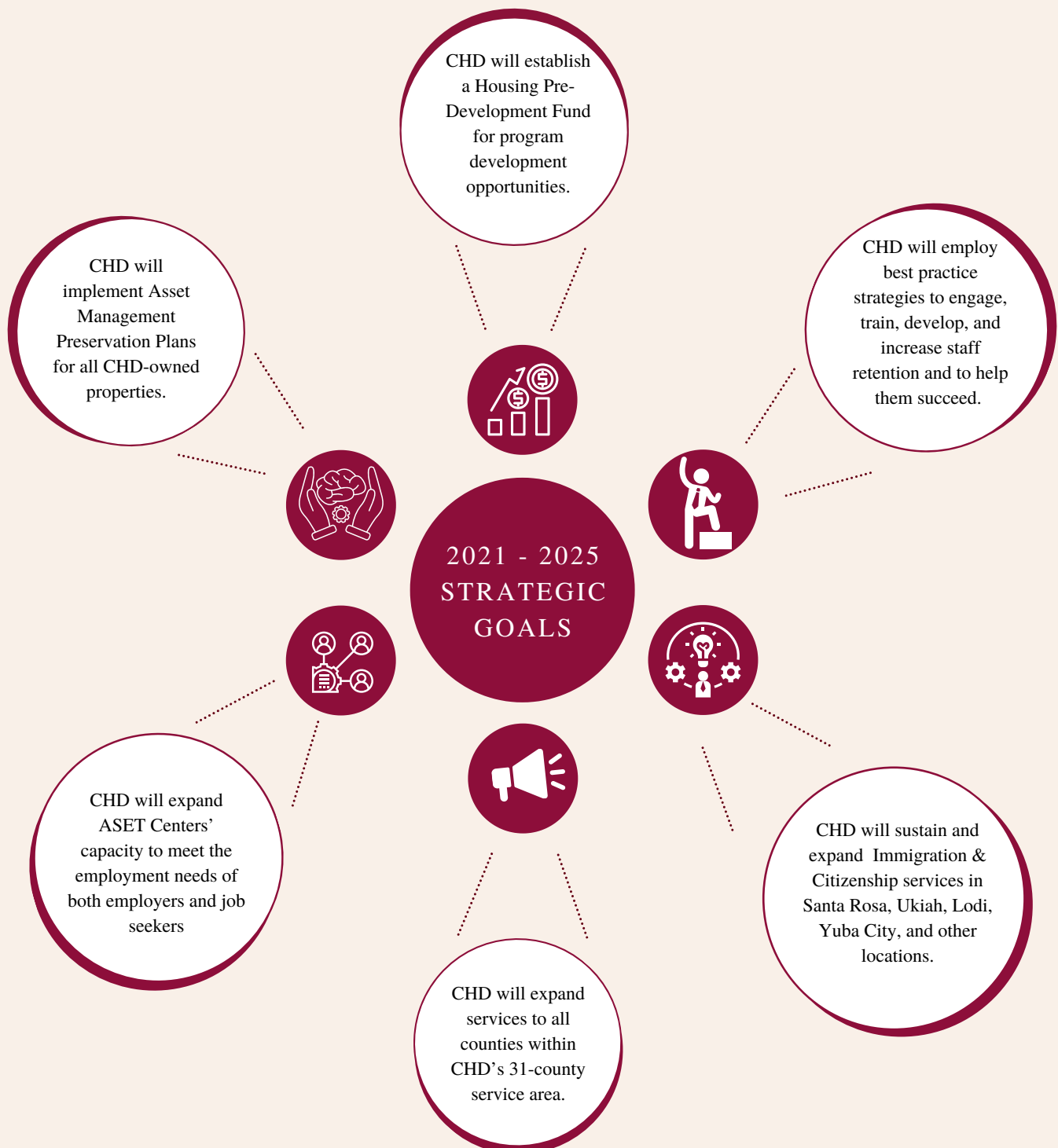
Values

At California Human Development, we believe in:

- Service with Respect
- Service with Integrity
- Service with Honesty
- Service with Humility

Strategic Goals

Similar to our mission statement, strategic goals act as a guide for CHD. Strategic planning is important to ensure the longevity and sustainability of our services. These are CHD's strategic goals in 2021 - 2025.





Farmworker Services

Throughout 2021, our Farmworker Services Division battled the continuous effects of the COVID-19 pandemic, but like our clients, we persisted. As a division, some of our services and training programs had to adapt quickly due to the ever-shifting pandemic landscape.

Our Anthony Soto Employment Training (ASET) Centers and other partnering educational entities partially shut down during the pandemic in 2020 and 2021. This created challenges in placing clients into training programs which resulted in a significant waitlist this year. Even now after the mandates have been lifted, centers have struggled with capacity issues. We have had to ensure the safety of staff and students, as well as deal with the large waiting lists created by the closures. To address this need we purchased training simulators in hopes of using technology to meet our capacity needs.

The pandemic also increased the demand for basic needs for farmworkers. This past fiscal year, we supported families with basic needs such as gas, food, rental assistance, and utilities, just to name a few. Our case managers in the northern part of our service area have been providing much-needed assistance to the residents of Tulelake. The small town of Tulelake consists of many agricultural workers who have minimal means to meet their basic needs. The work we do in Tulelake is also done by our team across our 31-county service area. We continue to support our clients in finding greater financial stability through our job training services, vocational education, career services, and courses in English as a second language.

Despite all the challenges we faced as a division, we also had some amazing accomplishments. We had the honor of not only being nominated, but also receiving the nonprofit agency award of excellence from the San Joaquin Hispanic Chamber of Commerce. We also had the privilege to be nominated for the Puente y Ganas award hosted by Los Cien, as an agency that has provided services to the Hispanic community in Sonoma County.

Our Farmworker Services Division is making sure to adapt and navigate options to continue to help our clients. We see firsthand how essential these services are to our farmworkers. Looking forward, we hope to continue to serve more of our clients and lead them to greater financial stability through our services.

**From July 1st, 2021 to June 30th, 2022,
Farmworker Services has....**

Placed
478
clients into
unsubsidized
employment

Served a
total
number of
3,959
clients

*Please note these numbers
are as of August 2022

Farmworker Services Client Success



"Expanding my career in the medical field would not have been possible without the assistance of California Human Development."

- Carla P. Cabrera

Our Farmworker Services Division meets our clients wherever they are in their life journeys and works with them to create individualized plans for success. Carla Partida Cabrera is a young woman from Chico who found the assistance she needed to complete her goal of pursuing a career in the medical field.

*Carla found out about **CHD** by chance, and as a result, she received:*

- The **tuition** for her next career training
- **Supportive services** and **financial aid** to take care of her needs while in training

Her parents immigrated to the United States early as young adults, striving for an improvement in their lives as well as their children's. As a result of their hard work and dedication, they became naturalized citizens.

Carla dreamt of having a stable career and obtaining a secure and fulfilling future. She had attended Butte College and completed the CNA program but she wanted to expand her skills and knowledge in this ever-growing field. Carla heard about CHD through the interview panel for Medical Assistant training with the Glenn County Office of Education. Carla became interested in learning about CHD and decided to reach out and see if she was eligible for any of our services.

After completing her screening, she was eligible for the WIOA 167 grant. Carla was able to have the total tuition cost of her training, as well as supportive services available to her. The supportive services she received allowed her to receive some extra support while she attended her training.

Carla was recognized by her professors as the top student in all her courses. She was dedicated and eager to learn. She graduated from the program this Spring of 2022 and was offered a position at a clinical site. Carla's success is a testament to her hard work and commitment to pursuing the opportunities she deserves. We are glad to have been a small part of her story.



Affordable Housing

California Human Development is dedicated to providing safe, quality, and affordable housing. We provide housing for farmworkers, seniors, adults with disabilities, and low-income individuals in Lake, Napa, Sonoma, and Sutter County. Throughout the past year, our residents were still reeling from the effects of COVID-19.

In 2021, our Affordable Housing Program found itself still needing to mitigate the lasting effects of the COVID-19 pandemic. Our Napa Farm Labor Centers which provide room and board to farmworkers in the surrounding areas endured COVID-19 outbreaks. However, our staff at each center ensured that lodgers, as well as staff members, continued following CDC guidelines and protocols to avoid any further outbreaks at the facilities. Thanks to all the efforts of the staff and lodgers, all three of our centers were able to operate throughout the year.

At Parkway Plaza, our housing site in Fairfield, our seniors normally have regular gatherings and events to bring them together and encourage community building. However, due to the pandemic, we had to rethink what these gatherings are. Our community room remained closed to prevent enclosed gatherings, but that didn't stop us (or our seniors) from being "in the community" outdoors. Working on the community garden together, taking outdoor fitness classes, and more, Parkway Plaza residents found ways to continue to build community in 2021.

This fiscal year we were able to focus on rehabbing Aytch Plaza which is our farmworker affordable housing in Lake County. A few of the renovations that are being completed include: roofing, A/C units, painting, sidewalls, and more. Aside from Aytch Plaza, we have been focusing on our other housing complexes and upgrading their energy efficiency. We are still working on the pre-development of Ortiz II which will have thirty-eight subsidized farmworker units.

Highlights

652

Residents were served through our farmworker, low-income, and senior housing.

175

Farmworkers served through our Farm Labor Centers in St. Helena and Calistoga.

51,360

Bed Nights for Farmworkers in Napa County.

*Approximately
\$2.1 Million in federal
subsidies to support rent*

Affordable Housing Client Success



Parkway Plaza continues to grow its platform for the coordination and delivery of services to better address the interdependent health and supportive service needs of its older residents.

We address hunger by providing onsite food distribution with our partner the Contra Costa & Solano Food Bank, where we provide healthy food boxes to our residents three times a month. To help Parkway Plaza residents live healthier lives, we offer a range of health and wellness services. Fitness classes and physical activity programs invigorate the body and mind. Nutrition Cooking classes, in partnership with Catholic Charities, help teach how to shop on a budget and prepare healthy meals. Our Community Food Forest is thriving, with the help and partnership with Sustainable Solano. Residents are active in maintaining the garden and have access to fresh fruits and vegetables year-round. We have regular health screenings and vaccination clinics are offered monthly from our partners at Touro University to help residents manage their health.

In addition, Parkway Plaza Social Services staff help residents sign up for many state and federal funding programs, for additional benefit programs, and to navigate the complex health care system. Evidence shows that stable housing improves health outcomes and prevents unnecessary, high-cost, institutional-based medical care. We work closely with healthcare providers to deliver essential resources through our Resident Services programming, to help residents at Parkway Plaza age in place.





Immigration & Citizenship

The Immigration & Citizenship (I&C) Program took time in 2021 to revamp its approach to services. While we focused on our clients' needs, we also took time to analyze our operations. The pandemic forced many CHD programs and divisions to modernize and find new approaches to service and the I&C Program took the opportunity to better itself.

Due to the high demand for Immigration & Citizenship services, the team implemented new technological developments to better serve our clients. Our use of Exponent Case Management, a Salesforce platform, makes it easier to prepare cases and serve our clients in a larger capacity. As we look to the future of the program, we plan to continue expanding our Salesforce platform to create internal referrals that will further assist the clients we serve.

Our staff is also expanding their skills and abilities to provide more services. As case managers gain more experience assisting clients and attending training, we are applying for their Department of Justice Accreditation which allows us to offer more types of immigration relief. In November, we will open a permanent office in Sutter County to address the growing need of the Afghan, Pakistan, and East Indian communities that reside there.

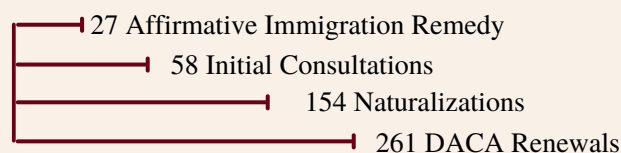
The demand for Immigration & Citizenship services continues to increase our case managers' workloads. Immigration applications are often delayed by USCIS because they are also overwhelmed with the demand.

This combination creates stress and worry on our clients who at times feel they will never see their immigration benefit delivered. The national impacts on immigration policy have also affected the changing landscape of international conflicts. Now more than ever, CHD has met the opportunity to increase services and address the needs of the immigrant communities we serve.

Highlights

*683 clients
received
services in the
fiscal year of
2021-2022.*

The California Department of Social Services (CDSS) Grant Funds allowed for...



... and citizenship education for 1,500 individuals!

Immigration & Citizenship Client Success



Pictured: Senior Case Manager, Sharon Gillies and Case Manager, Sarah Sameer

The Immigration & Citizenship process is confusing, tedious, and scary for many people seeking services. However, those seeking these services are taking steps to improve their lives and find new opportunities, and we stand ready to support them. Our Immigration & Citizenship team does the work needed to ensure the process is as easy as possible and alleviate those fears.

California Human Development's Immigration and Citizenship Program has been providing services since 2001. We strive to transform and improve people's lives by normalizing their immigration status through pathways available to them. We are honored to be a part of their journey.

In Afghanistan, Sayed worked for the President of the Afghan government until it fell to the Taliban in August 2021. Before his work with the President, he worked for the National Bank of Afghanistan. Sayed is now an Afghan refugee and when he first arrived in the United States, he was processed in Fort Bliss, Texas. He stayed in Fort Bliss for about three months until he made his way to California where he has family. In April 2022, Sayed went to the CHD office in Lodi seeking services to apply for asylum. After submitting his packet, he received a notification for an interview in San Francisco in May. Sayed is thankful to CHD for taking his case and for how fast the process went. He has his work authorization and social security number which allows him to work without fear of being deported back to Afghanistan.

His wife and children are still in Afghanistan. However, CHD is continuing to assist Sayed with the Travel Documents for his wife and children to come to the United States. Sayed misses his family very much and worries about them every day. He awaits the day they are with him because he knows they will be safe and his family will be complete.

Sayed expressed how grateful he is to Sharon and Sarah for helping him. Aside from the Immigration Services, they referred him to the San Joaquin truck driving program where he will complete his driving course. Sayed is looking forward to finding a good-paying job to support his family.



Day Labor Services

We spent the last year ensuring we were meeting with our Day Labor Services partners and clients regularly to maintain our rapport with the community. Our Day Labor Centers serve as a hub to connect employers with laborers seeking fair wages for a fair day's work. During the pandemic, our centers were forced to shut down and much of the outreach that is done was put on hold. As we continue to follow protocols and can operate safely, we are excited to be back to connecting employers with clients and providing services to the community.

To meet the need of our clients we worked with partners to provide health screenings, COVID-19 Safety workshops, and vaccinations to the laborers that utilized our Day Labor Services. Many members of the community do not have access to these health and wellness services so we are happy to be able to deliver these services with our partners. We have also been able to continue our food distributions at our Fulton location every first and third Tuesday of the month.

\$25,000 allocated for 139 PPE kits to be distributed.



Our center was awarded a grant through the Community Foundation of Sonoma County to help with Personal Protective Equipment (PPE) for the clients. The kits were distributed to our clients at the Day Labor Centers, Camp families, and the residents at Ortiz Plaza. The kits include food and water for a family of four, as well as a first aid kit and emergency hygiene kits. As fire season approaches we want to ensure our clients are prepared.

Moving forward we are excited to expand our Day Labor Services capacity by rehabbing both of our centers. This past fiscal year, we had the opportunity to make several renovations to our Day Labor Center in Fulton thanks to the City of Santa Rosa. Also, we plan to continue to develop new educational opportunities for laborers. The Day Labor Centers serve as a hub of resources and stable work for an often unseen population and we are proud to offer these services to the community.



Camp Núñez



CHD's Camp Núñez provides an opportunity for more than 100 disadvantaged, and specifically, low-income children from our community, to experience the wonders of nature. Due to the pandemic, we have been unable to host camp in person. However, our amazing staff has found alternative ways to continue to support the campers through these unprecedented times.

Thanks to our grantors, the Sonoma County Vintners Foundation and the Community Foundation of Sonoma County, we were able to provide our campers with printers and recreational art kits. The printers supported our campers during their hybrid online school year to ensure they could complete assignments and print out any classwork needed. Not only were the students able to benefit from the printers for school but it was beneficial to the rest of the family. The art kits gave our campers a creative outlet to express themselves and supported their mental health. CHD's Camp Núñez is hoping to return in person next year in Summer 2023.

We are also excited to have entered into a partnership with Sonoma State University to conduct research into the importance of programs like Camp Núñez. What does a free summer camp mean to low-income families and what are the tangible benefits? We look forward to sharing the research findings with our community when the study is complete.





End of an Era: Substance Recovery Services & disABILITY Services



In May of 2022, California Human Development had to make the extremely difficult decision to close down our Substance Recovery Services, which consisted of our Outpatient Treatment Services (OPT) and Residential Treatment Services, and our disABILITY Services programs. Unfortunately, many factors led to this painful decision.

During the pandemic, the number of clients served by these programs declined significantly, which impacted our income. At the same time, with inflation and the need to maintain staffing levels, our expenses continued to rise. After months of financial losses, and given limited financial reserves and operational options, CHD concluded that the programs could not be financially sustained.

While this is a challenging time, we are extremely proud of the amazing work that our CHD staff members did to ensure that everyone who came to CHD received the best possible service. Our client success stories are what made all the work worth it.

Our Substance Recovery Services and disABILITY Services programs did amazing work throughout the years and we will cherish all the memories. Some of the staff members began their journey with CHD as clients. CHD knows that they will continue doing amazing things.

CHD disABILITY Services has had a rich history of serving the differently abled in Sonoma County. disABILITY Services emphasized the "ABILITY" of all the individuals they had the privilege of serving. That commitment was embedded into the fabric of the program which is evident by the name. The program included Day Services which gave clients a space to come together and be in the community under the supervision of our Direct Support Professionals. disABILITY Services also supported the individuals who wanted to work and become self-sufficient with job coaching and job readiness.

Substance Recovery Services (SRS) has been a part of CHD's legacy in Sonoma County for many years. Through our Athena House Program, we provided women and women with children the support needed to start their journey to recovery. Our SRS division also provided the graduates of the Athena House Program a transitional space to begin the next step of their lives in a community with those who understand what the journey is. Our staff at Athena House made sure the women felt at home and knew that they had a whole community cheering them on. Another program that was part of our SRS division was the Outpatient Program. Our OPT program worked closely with those seeking services to find recovery strategies to implement into their lives. Just like our staff at Residential Treatment, the OPT staff supported its clients and related from personal experiences.

End of an Era: Substance Recovery Services & disABILITY Services

ATHENA HOUSE

Athena House, in Santa Rosa, California, is a residential treatment center serving women with histories of addiction and the criminal lifestyles related to addiction. Most of the women we serve have experienced abusive childhoods and—their frequent sequel—abusive adult relationships. Many have children. We provide each woman with an individualized plan that addresses the treatment of her addiction, her emotional and psychological challenges, her health, family, educational, and vocational needs. Length of residential treatment varies from nine to twelve months, and is followed by 26 weeks of structured after-care.

In 1992 we provided residential services to 26 women, and provided after-care counseling to 6 women. We provided a total of 4,047 bed-days, and 1,352 counseling hours, as well as 27,040 hours of structured therapeutic activities. Of the 8 women who completed residential care in 1992, all are now employed.

It is worth noting that the public cost of jail time for non-violent crimes is about \$100 per day. Individuals diverted to Athena House's minimum security facility cost the public less than \$50 a day, a figure which includes \$12 per day of General Assistance (paid for six months only).

Community Services

REDWOOD EMPIRE INDUSTRIES

We offer training and sheltered employment to people with emotional, intellectual, or social disabilities at Redwood Empire Industries in Santa Rosa, California. In addition to training, we offer our clients help in developing social and practical coping skills.

In 1992 we served 124 clients. Of these, 78 individuals worked in our sheltered workshop while 23 individuals worked in crews or group placements with local private industry. The combined yearly earnings of these 101 persons were \$142,156. In addition, we placed 24 individuals in supported employment, with combined yearly earnings of \$167,232.

Local private industry makes an invaluable contribution to this program, showing compassion and a willingness to experiment, and finding profit in the venture. In addition to our clients' private sector earnings, the program is funded by the California Department of Rehabilitation, the Sonoma County Department of Mental Health, and Santa Rosa Junior College.



Pictured: Residential Treatment Staff and Board Member



Pictured: Athena House



Pictured: disABILITY Services client



Pictured: disABILITY Services clients



Pictured: disABILITY Services Clients



Pictured: disABILITY Services staff and a client



Pictured: Outpatient Services Staff



Jenna McAdam, third from left, in group session with the women of Athena House.

Pictured: Residential Treatment Staff



Pictured: disABILITY Services Client

Diversity, Equity, & Inclusion at CHD



In our mission to open doors, build strong communities and improve lives, California Human Development understands the pivotal role that a robustly diverse organization plays in achieving organizational and community goals. Our strength comes from the diverse population that we hire and serve. We celebrate all the qualities and attributes that make us unique, and we firmly believe in the power of an inclusive community, where we can create a sense of belonging for everyone and provide a basis for social justice. Through our efforts, we strive toward diversity, equity, inclusion, belonging, and social justice by engaging in continuous improvement and addressing any barriers arising from bias, discrimination, racism, and organizational structures that support such attitudes and actions.

Diversity, equity, and inclusion are engrained in the culture of CHD. We will continue to foster an inclusive environment by committing to:

- Embracing and deriving value from the variety of views that a diverse organization and individuals bring to achieve inclusive excellence in all that we do.
- Educating our personnel to be social justice advocates by creating programs that reflect the diversity of our communities and elevate cultural awareness.
- Regularly assessing hiring practices and performance review processes to attract, retain, and develop talented employees from diverse backgrounds.
- Addressing disparities in areas such as Board of Directors representation, community impact, and retention.
- Partnering with other organizations serving marginalized, underserved, or extending opportunity to disadvantaged members of the community.

CHD's commitment to diversity, equity, and inclusion will be reflected in the following expectations and actions:

- Members of CHD management are committed to building and sustaining an equitable and inclusive work environment where cultural diversity is celebrated and valued. Those involved in the hiring process will practice and advocate for diversity, equity, and inclusion practices in the recruiting process.
- The CHD Board of Directors and all employees of the organization work to recognize, incorporate and value diversity as opportunities to gain valuable insights from one another and to learn from each other's experiences and global ideas.
- CHD promotes open dialogue, active listening, and the incorporation of ideas from employees to establish inclusion as an organizational landmark.
- Advance equity and social justice at CHD and improve equity and justice on a global scale.

A Special Thank You

The following organizations were close partners and valued supporters of our overall goals in 2021-2022.

Alliance for Workforce Development, Inc.
 Association of Farmworker Opportunity Programs
 Butte County Regional Occupational Program
 California Department of Community Services and Development
 California Department of Developmental Services
 California Disability Services Association
 California Department of Social Services
 California Labor and Workforce Development Agency
 California Regional Petaluma Adult Education
 California Rural Legal Assistance
 California State University Sacramento
 California Tobacco Control Program
 Carpenters Training Committee
 Center for Employment Training
 Central Valley Opportunity Centers Inc.
 Chamber of Commerce
 City of Santa Rosa
 City of Stockton - Mayor's Office
 Colusa County Office of Education
 Community Foundation Sonoma County
 Community Resources Project (CRP)
 Community Services and Development Department
 Contra Costa County Workforce Development Board
 East Bay Works
 El Dorado Workforce Development Board
 Elk Grove Adult and Community Education
 Employer's Training Resource
 Employment and Training Panel
 Employment Development Department

If we have failed to name any of our benefactors, our apologies are as heartfelt as our thanks for the help.

A Special Thank You

The following organizations were close partners and valued supporters of our overall goals in 2021-2022.

Glenn County Regional Occupational Program
Golden Sierra Workforce Development Board
Grow West
Heffernan Insurance Brokers
Humboldt County Workforce Development Board
James Gore
Job Link
Job Training Center-Workforce Solutions
La Cooperativa Campesina de California
Latino Services Provider
Liberty Union High School
Medtronic
Mendocino County Office of Education Regional Occupational Program
Mendocino Private Industry Council
Monitor Advocate Office
Mother Lode Job Connection
Napa Valley Adult Education
North Bay Property Advisors
North Bay Regional Center
North Central Counties Consortium
North State Building Industry Foundation
Northern Rural Training and Employment Consortium
Oroville Adult Education Career and Technical Center
Proteus Inc.
Sacramento County
Sacramento Employment and Training Agency
Santa Rosa Junior College
San Joaquin County
San Joaquin County Hispanic Chamber of Commerce

If we have failed to name any of our benefactors, our apologies are as heartfelt as our thanks for the help.

A Special Thank You

The following organizations were close partners and valued supporters of our overall goals in 2021-2022.

San Joaquin Delta College
San Joaquin Housing Authority
San Joaquin Public Health Services
San Joaquin Valley Health Fund
San Joaquin WorkNet
SMART Business Resource Center
Solano Adult School
Solano Community Foundation
Solano County
Solano County Workforce Development Board
Solano Employment Connection
Solano Junior College
Sonoma County
Sonoma County Vintners Foundation
Sonoma County Department of Health Services
Sonoma County Department of Human Services
Sonoma County Workforce Development Board
Sonoma State University
Stockton Unified School District
Sutter County Library
Truck Driving Academy
Union Local 442
United States Department of Labor
United States Probation & Pretrial Services
University of Pacific
Valley Plastics
Whitney Olson
Workforce Alliance of the North Bay
Yolo County Office of Education
Yolo County Workforce Development Board

If we have failed to name any of our benefactors, our apologies are as heartfelt as our thanks for the help.

A Special Thank You

We would like to thank the generous individual donors who helped CHD achieve our mission of opening doors, building strong communities, and improving lives through their financial contributions. We couldn't do it without your support.

Michelle Agnew
 Emila Aguilar
 Maximilliano Aguilar
 Steven Asch
 Mary Biggs
 Hector Brambila
 Kathy Byrne
 Laura Canul
 Randy Clay
 Shannon Clay
 Evelyn Cruz
 Enedina De la Cruz
 Juan Delgado
 Marianne Doar
 Michael Gill
 Shinder Gill PhD
 Jesus Gonzalez
 Gregory Grigson
 Denise Grove
 Mary Harris
 Sarah Hasselberg
 Heather Henry
 Raul Hernandez
 Jeremy Hogan
 Frances Holmes

Patty Holroyd
 Carly Velez Huston
 Olivia Iannicelli
 Ricardo Juarez
 Brian Keats
 Cristina Larsen
 Leona Marino
 Karen Messick
 Theresa Ordonez
 Jasmine Palmer
 Horacio Paras
 Vilay Phommaviseth
 Mary Potts
 Nicole Roldan-Leben
 Monica Russell
 Sheila Secchitano
 Lisa Sewell
 Tom Sharpe
 Antonio Silva
 Thomas and Dorothy Stuebner
 Kelly Sullivan
 Joyce Suzuki
 Keegan Wallace
 Jessica Watson
 Amber Yearton

If we have failed to name any of our benefactors, our apologies are as heartfelt as our thanks for the help.

CHD Directory

Butte County

Farmworker Services

1249 Mangrove Ave., Chico, CA 95926
Phone: 916-371-8220 x1051

Colusa County

Farmworker Services

146 Market St., Colusa, CA 95932
Phone: 530-458-0326

Contra Costa County

Farmworker Services

929 2nd St., Brentwood, CA 94513
Phone: 925-634-2565 x1047

Glenn County

Farmworker Services

451 S. Villa Ave., Willows, CA 95988
Phone: 530-329-5038

Lake County

Aytch Plaza

4440 Cruickshank Rd., Kelseyville, CA 95451
Phone: 707-963-7496

Farmworker Services

55 First St., Box M, Lakeport, CA 95453
Phone: 916-371-8220 x4335

Mendocino County

Farmworker Services

2550 N State St., Suite 3, Ukiah, CA 95482
Phone: 707-467-5959

Immigration and Citizenship

1000 Hensley Creek Rd., Ukiah, CA 95482

Napa County

Farmworker Services

2751 Napa Valley Corporate Dr.,
Building A, Napa CA 94558
Phone: 707-253-4648

Mondavi Farmworker Housing Center

5589 Silverado Trail, Napa, CA 94558
Phone: 707-495-3335

Calistoga Farmworker Housing Center

3996 Helena Highway, Calistoga, CA 94515
Phone: 707-321-4961

Napa County (Continued)

River Ranch Farmworker Housing Center

1109 Silverado Trail, St. Helena CA 94574
Phone: 707-963-7496

Sacramento County

Farmworker Services

1000 C St., Suite 100, Galt, CA 95632
Phone: 209-744-7702

San Joaquin County

Anthony Soto Employment Training Center

2895 Teepee Dr., Stockton, CA 95205
Phone: 916-371-8220

Farmworker Services

631 East Oak St., Lodi, CA 95240
Phone: 209-331-2081

Immigration & Citizenship

631 East Oak St., Lodi CA 95240
Phone: 209-570-8118

Shasta County

Farmworker Services

1325 Pine St. Redding CA 96001
Phone: 530-225-2157

Solano County

Farmworker Services

459 Marvin Way, Dixon, CA 95620
Phone: 916-371-8220 x1045

Affordable Housing

Parkway Plaza

188 East Alaska Ave., Fairfield, CA 94533
Phone: 707-435-3440

Sonoma County

Farmworker Services

3315 Airway Dr., Santa Rosa, CA 95403
Phone: 707-523-1155 x4766

Fulton Day Labor Center

1200 River Rd. Fulton CA 95439
Phone: 707-328-9793

Healdsburg Day Labor Center

405 Grove St., Healdsburg, CA 95448
Phone: 707-433-6652

Sonoma County (Continued)

Affordable Housing

Ortiz Plaza

5360 Old Redwood Highway, Santa Rosa, CA 95403
Phone: 707-293-9720

Immigration & Citizenship

3315 Airway Dr., Santa Rosa, CA 95403
Phone: 707-523-1155 x4721

Yolo County

Farmworker Services

1280 Santa Anita Ct., Suite 190, Woodland, CA 95776
Phone: 916-371-8220

Anthony Soto Employment Training Center

1280 Santa Anita Ct., Suite 190, Woodland, CA 95776
Phone: 916-371-8220 x1037

Woodland

117 West Main St., Suite 1B, CA 95776
Phone: 916-371-8220

Yuba County

Farmworker Services

201 D St., Suite Q, Marysville, CA 95901
Phone: 530-723-3591

Affordable Housing

Mahal Plaza

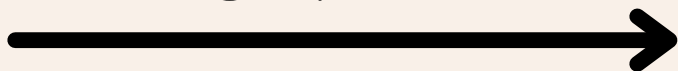
1719 Franklin Rd., Yuba City, CA 95993
Phone: 530-671-6810



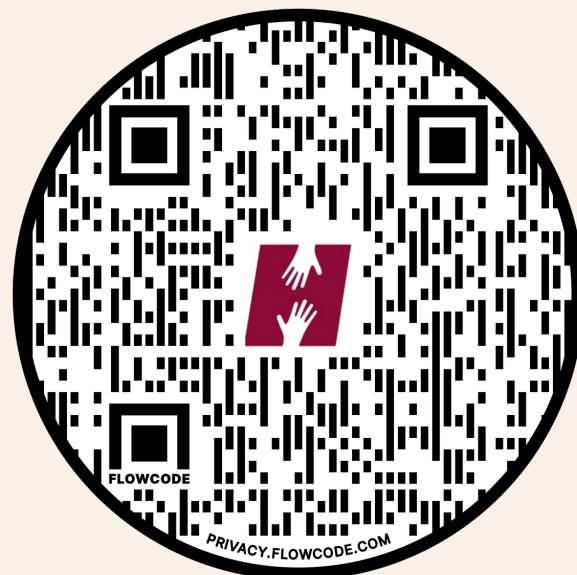


GET INVOLVED

DONATE



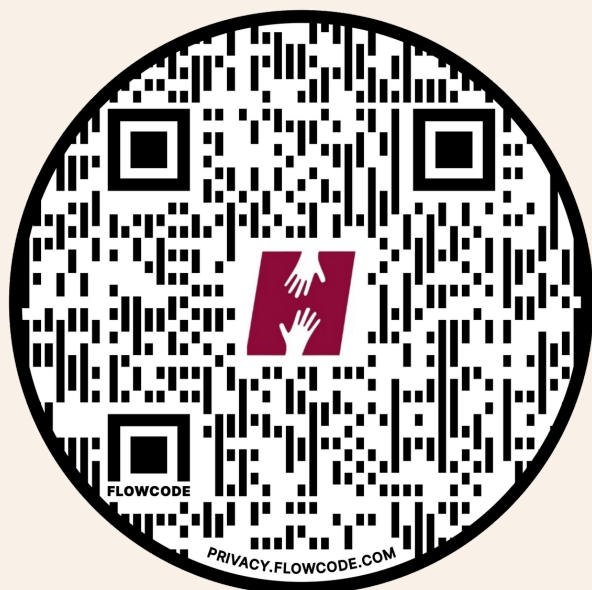
When you donate to our organization and our programs, you are supporting our commitment to help empower those people disproportionately affected by systemic inequity. Scan the code to donate to an individual program or our organization as a whole.



VOLUNTEER



If you believe in the possibilities of human potential and supporting individuals in realizing their dreams through support, please join us. We have rich volunteer opportunities and are always looking for kind-hearted individuals to support the work we do. Scan the code to fill out a form.



CaliforniaHumanDevelopment.org/getinvolved/

Acknowledgements

2021-2022 Annual Report Credits

Project Supervisor

Isaiah Antoine, CHD Community Impact Director

Photography

Liz Moskowitz
CHD Staff

Writing & Editing

Isaiah Antoine, Community Impact Director
Yeny Cardona, Community Impact Coordinator
Theresa Ordóñez, Program Director
Thomas Stuebner, Chief Executive Officer

Layout & Design

CHD Community Impact Team
Isaiah Antoine, Community Impact Director
Yeny Cardona, Community Impact Coordinator



California Human Development

Headquarters:

3315 Airway Drive, Santa Rosa, CA 95403

Phone: 707-523-1155

CaliforniaHumanDevelopment.org